



# PETERS CLOTHIERS RETAIL CENTER

12307-12323 State Line Road, Kansas City, Missouri



## LEASE RATE: \$25/SF NNN | UP TO 4,541 SF AVAILABLE

### DEMOGRAPHICS

	1 mile	3 miles	5 miles
Estimated Population	7,661	52,706	164,393
Avg. Household Income	\$190,878	\$186,900	\$155,189

- Prime State Line Retail Location - FOR LEASE
- Great access and visibility to State Line Road
- Newly renovated strip center within the last 2 years
- Ample Parking available in front of space
- High traffic area
- 1,509 SF end cap space; can be combined with 3,032 SF in-line space

 [CLICK HERE TO VIEW MORE LISTING INFORMATION](#)

For More Information Contact:

KARSYN SMITH | 816.412.7372 | [karsynsmith@blockandco.com](mailto:karsynsmith@blockandco.com)

ALEX BLOCK | 816.412.7373 | [ablock@blockandco.com](mailto:ablock@blockandco.com)

Exclusive Agents



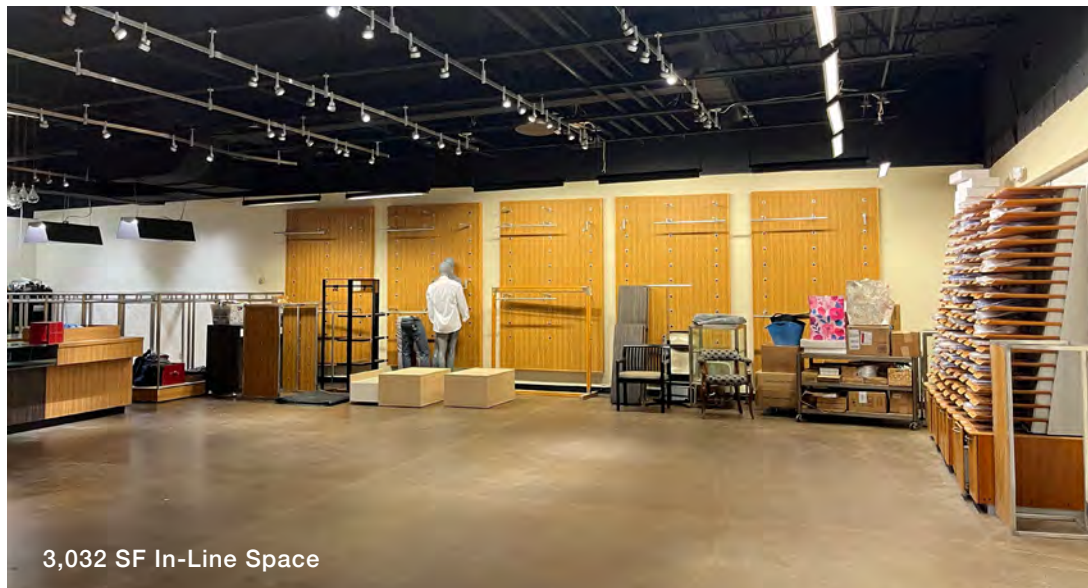


# PETERS CLOTHIERS RETAIL CENTER

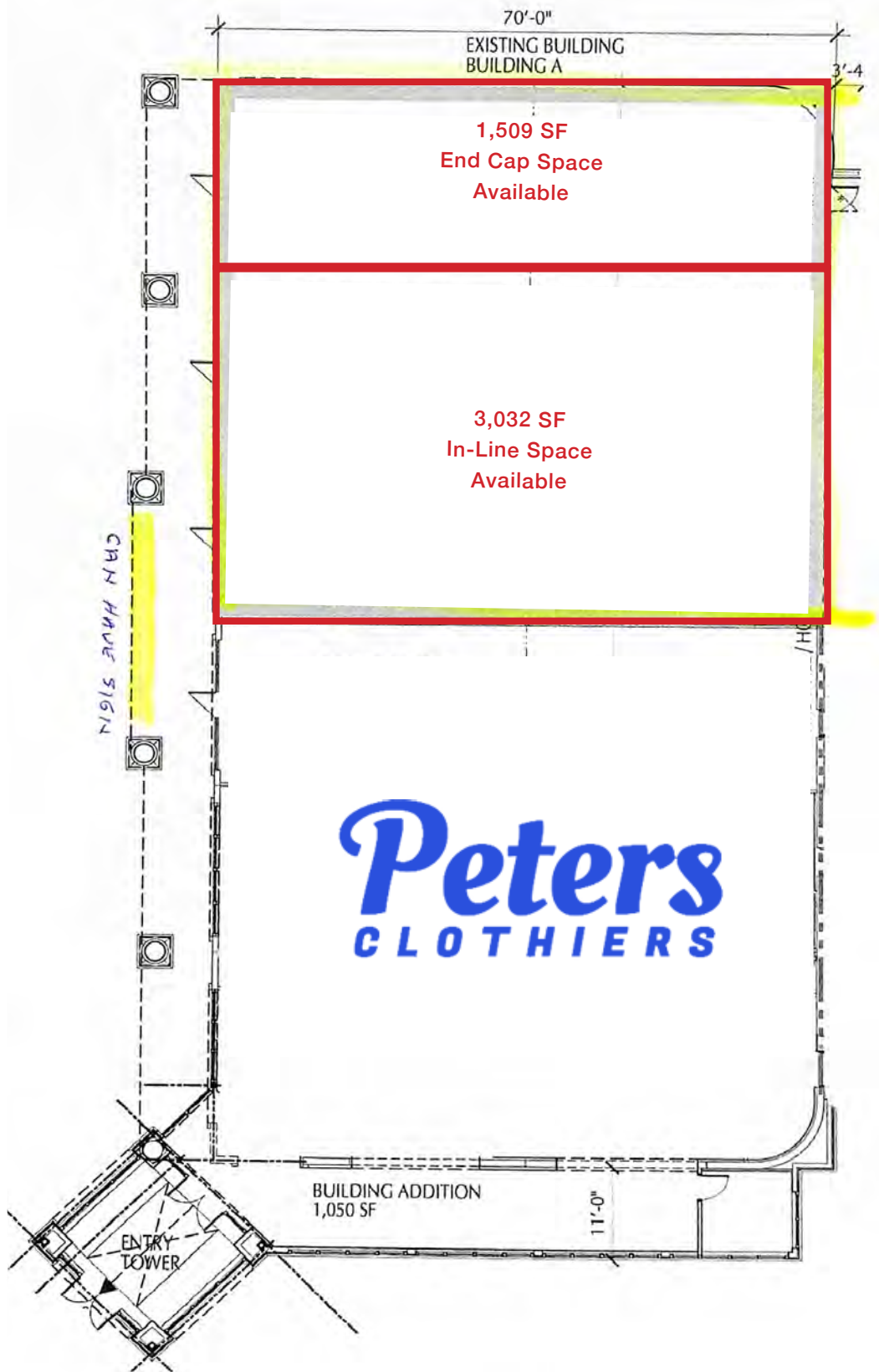
12307-12323 State Line Road, Kansas City, Missouri

**RETAIL  
SPACE  
FOR LEASE**

## PHOTOS



**SITE PLAN**



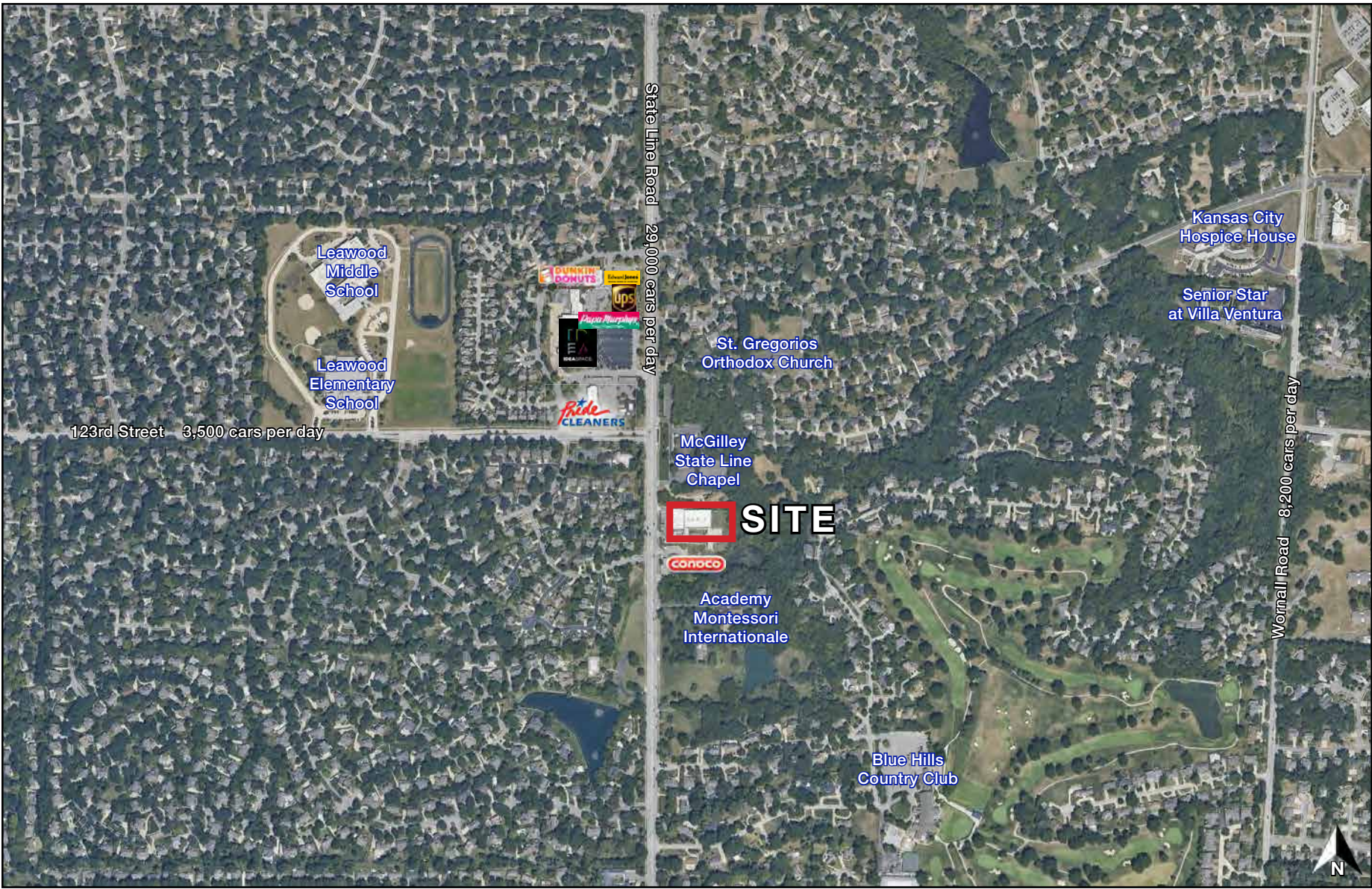


# PETERS CLOTHIERS RETAIL CENTER

12307-12323 State Line Road, Kansas City, Missouri

**RETAIL  
SPACE  
FOR LEASE**

## AERIAL

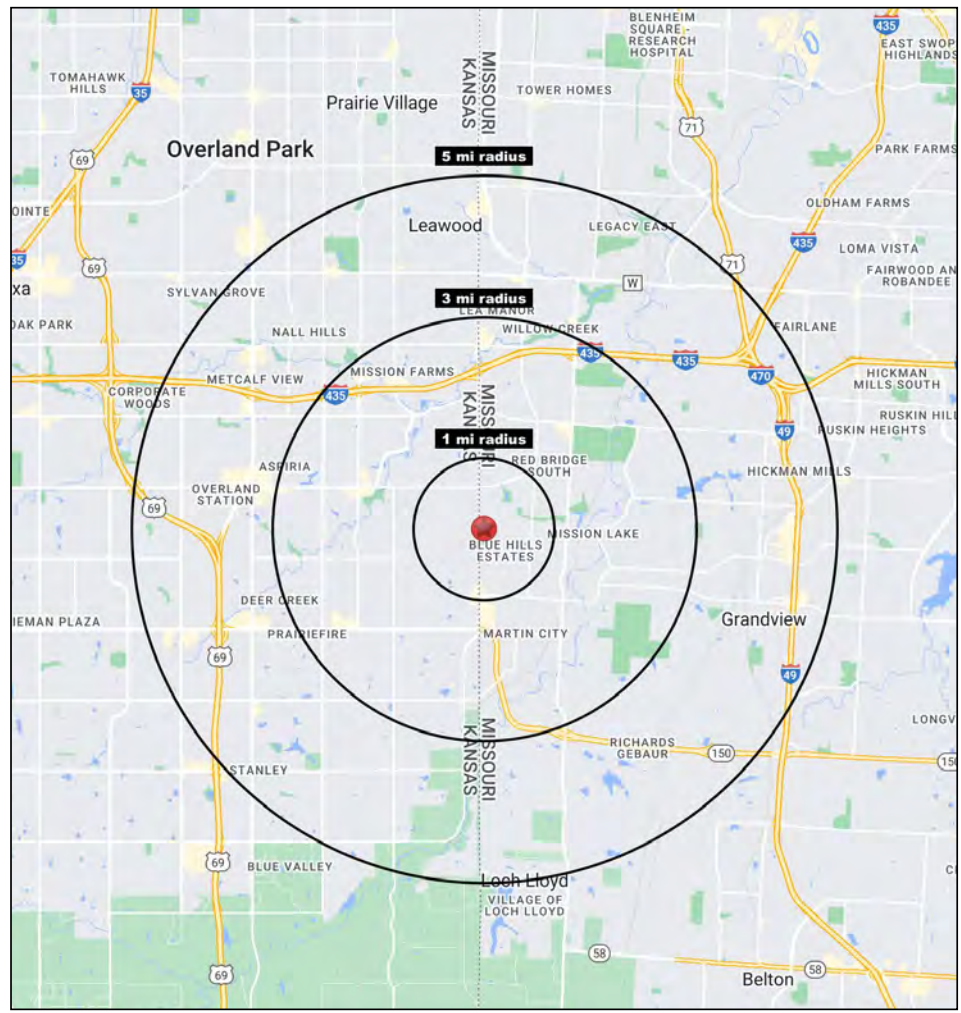
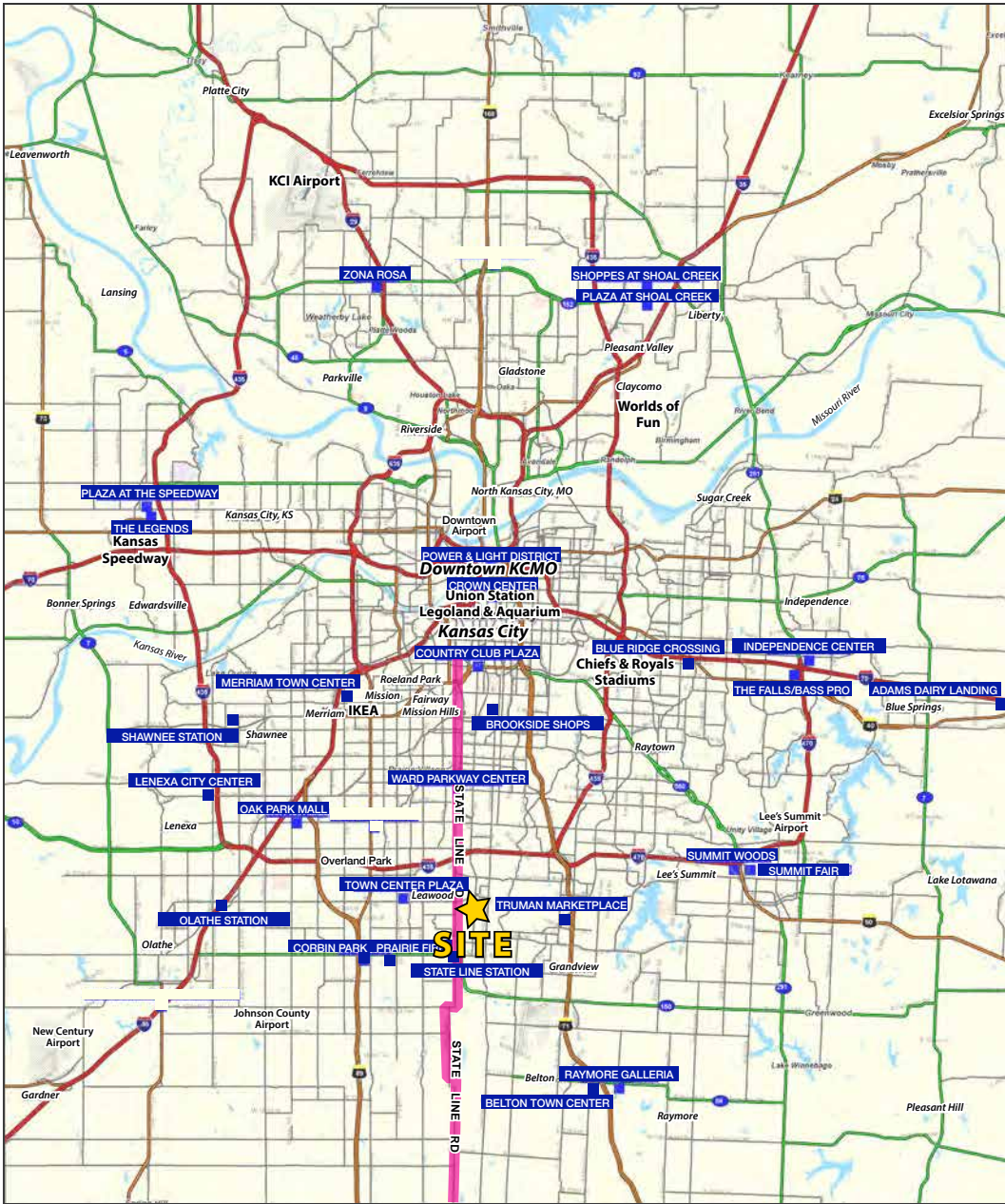




# PETERS CLOTHIERS RETAIL CENTER

12307-12323 State Line Road, Kansas City, Missouri

**RETAIL  
SPACE  
FOR LEASE**





# PETERS CLOTHIERS RETAIL CENTER

12307-12323 State Line Road, Kansas City, Missouri

12307-12323 State Line Road Kansas City, MO 64145	1 mi radius	3 mi radius	5 mi radius
<b>Population</b>			
2023 Estimated Population	7,661	52,706	164,393
2028 Projected Population	7,758	53,254	166,910
2020 Census Population	7,685	52,795	162,897
2010 Census Population	7,804	48,499	151,069
Projected Annual Growth 2023 to 2028	0.3%	0.2%	0.3%
Historical Annual Growth 2010 to 2023	-0.1%	0.7%	0.7%
2023 Median Age	52.3	46.8	42.1
<b>Households</b>			
2023 Estimated Households	3,107	22,578	70,654
2028 Projected Households	3,159	23,010	72,363
2020 Census Households	3,085	22,437	69,254
2010 Census Households	3,049	20,240	63,136
Projected Annual Growth 2023 to 2028	0.3%	0.4%	0.5%
Historical Annual Growth 2010 to 2023	0.1%	0.9%	0.9%
<b>Race and Ethnicity</b>			
2023 Estimated White	85.1%	80.3%	73.9%
2023 Estimated Black or African American	5.8%	8.6%	11.6%
2023 Estimated Asian or Pacific Islander	4.2%	5.7%	7.6%
2023 Estimated American Indian or Native Alaskan	0.2%	0.2%	0.2%
2023 Estimated Other Races	4.7%	5.3%	6.7%
2023 Estimated Hispanic	3.9%	4.5%	5.9%
<b>Income</b>			
2023 Estimated Average Household Income	\$190,878	\$186,900	\$155,189
2023 Estimated Median Household Income	\$153,110	\$126,014	\$110,214
2023 Estimated Per Capita Income	\$77,563	\$80,227	\$66,808
<b>Education (Age 25+)</b>			
2023 Estimated Elementary (Grade Level 0 to 8)	1.2%	0.8%	1.1%
2023 Estimated Some High School (Grade Level 9 to 11)	1.7%	1.3%	1.9%
2023 Estimated High School Graduate	9.0%	10.4%	13.0%
2023 Estimated Some College	16.0%	17.7%	18.1%
2023 Estimated Associates Degree Only	3.1%	5.3%	5.9%
2023 Estimated Bachelors Degree Only	36.7%	35.7%	34.4%
2023 Estimated Graduate Degree	32.4%	28.9%	25.7%
<b>Business</b>			
2023 Estimated Total Businesses	265	3,210	9,413
2023 Estimated Total Employees	1,998	55,086	137,587
2023 Estimated Employee Population per Business	7.5	17.2	14.6
2023 Estimated Residential Population per Business	28.9	16.4	17.5

©2023. Sites USA. Chandler, Arizona. 480-491-1112 Demographic Source: Applied Geographic Solutions 4/2023. TIGER Geographv - RS1

